

Trace-It Technologies

OPERATING MANUAL TS420 DATA TERMINAL

November 15, 2006
TRACE-IT Information Systems

OVERVIEW	3
BENCH SCALE OPERATION	4
TS420 6 Button Bench Scale	4
Setup Product	5
Printing a Label	9
Close Pallet Short.....	9
Delete Pallet	9
Reprint Last Box	10
Batch Label	10
Main Menu	10

OVERVIEW

The TRACE-IT Model TS420 is a PC based data entry terminal with touch screen technology and protected by a waterproof enclosure.

The TS420 primary use is to connect scales and other data generating devices and provide a means for an operation to communicate with the Central File Server for data storage and retrieval.



Shown above is a TS420 connected to a carton scale with DataMax label printer.

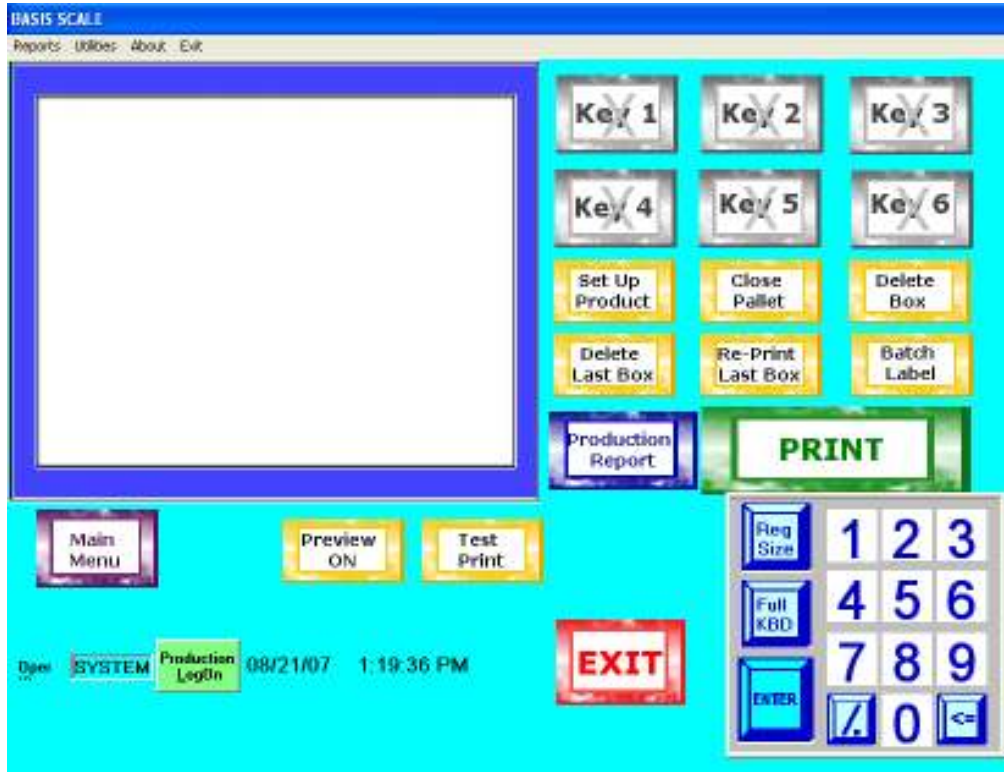
Common uses for the TS420 include;

<ul style="list-style-type: none">• Connecting scales to the Server• Stand alone terminals for shop floor data entry	<ul style="list-style-type: none">• Material receiving stations• Connected to scanners for recording the movement of raw material to production
<ul style="list-style-type: none">• Shop floor access to production, WIP and inventory information	<ul style="list-style-type: none">• Stand alone printing stations

This document will focus on the application to scaling and label printing.

BENCH SCALE OPERATION

TS420 6 Button Bench Scale



Click Setup Product to set-up one or all of the 6 hotkeys. This will bring up the following screen.

Setup Product

Scale Customer and Product Information

Key - 1 Current Product - Key 1 SCALE

02957 - SP 10-S LB SKNLS SMOKED Customer Product

Sell By 11/16/2007

Tare Wt 1.25

Lot # 227866

Oper ID: SYSTEM Production LogOn Rework

Cancel RUN

A	B	C	D	E	F	G	H	I	J	K	L	M	Reg Size	1	2	3
N	O	P	Q	R	S	T	U	V	W	X	Y	Z	NUM Only	4	5	6
Del Field	<=BkSp	ENTER	-	SPACE	ENTER	/	0	<=								

Choose the Key you would like to setup. Then choose the Product you would like to setup on that hotkey. It will default to the sell by date as calculated by the system for the product setup.

For those systems attached to an ERP only two sell by dates are allowed per day.

- Only a supervisor can change the second sell by as this will generate a new lot number.
- Sell by dates can not be switched if there are any open pallets of the same product number on a given day.

At the beginning of a new day, the operator can change the first “Sell By”, as always, until a box is weighed. Once boxes are weighed, only the supervisor can change sell by dates.

Key - 6 Current Product - Key 6

99998 - test test catch wt

Sell By 3/20/2006

Tare Wt 0

Lot # C

Oper ID: SYSTEM Production LogOn

Cancel RUN

SCALE

Customer Product

Keyboard: A B C D E F G H I J K L M N O P Q R S T U V W X Y Z, Del Field, <=BkSp, ENTER, -, SPACE, NUM Only, 1 2 3, 4 5 6, 7 8 9, 0, /, <=

Once boxes have accumulated, the "Sell By" is locked out

from being edited without supervisor rights.

Key - 6 Current Product - 99998

99998 - test test catch wt

Sell By 3/20/2006

Tare Wt 0

Lot # C

Oper ID: SYSTEM Production LogOn

Locked out

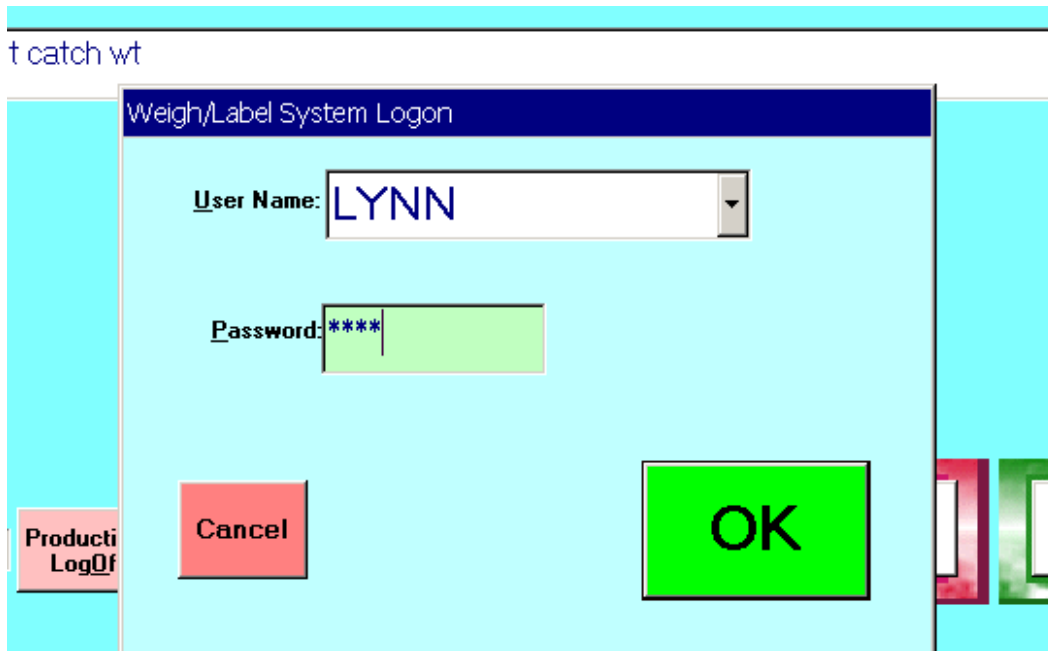
Cancel RUN

SCALE

Customer Product

To change the "Sell By" - this will add a new lot number.

- A supervisor must first log on:



Be sure to close any related open pallets, or the following error message will be displayed:



After a supervisor has logged on and made a successful “Sell By” change, a confirmation screen will be displayed:

Sell By

Tare Wt

Lot #

Add new lot number? X

Product already has one Sellby date for this product for today.
 If you want to change sellby dates - a new lot number will be generated.
 Do you want to generate a new lot number?


Once the two "Sell By" dates are inputted, an operator can easily switch back and forth:


Sell By

Tare Wt

Lot #

The main screen will reveal if the new lot number is running by highlighting in red:
Notice the newly generated lot number.

W  **99998 test test catch wt**

W  **Last Weighment = 15 pounds at 14:14**

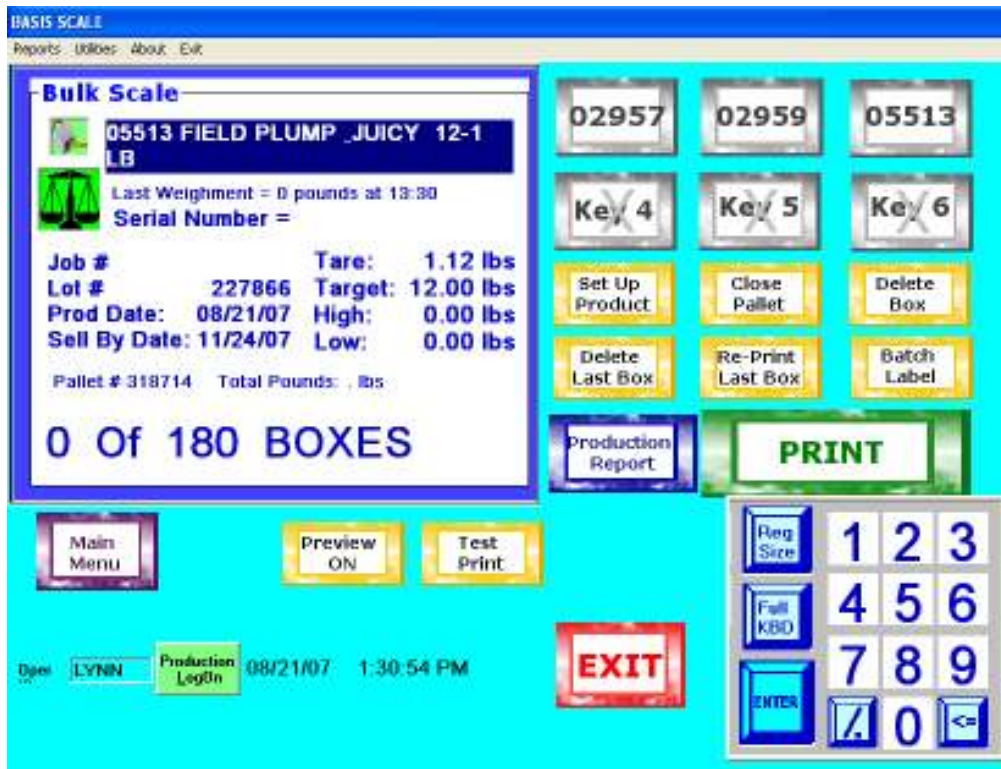
Y **Serial Number = 196663310252**

Batch#	C	Tare:	0.00 lbs
Lot#	196663	Target:	15.00 lbs
Prod Date:	01/30/06	High:	99.00 lbs
Sell By Date:	03/20/07	Low:	0.00 lbs

Pallet # 0 Total Pounds: . lbs

0 Of 10 BOXES

Printing a Label



First touch the product for the box coming down the line. All of the pertinent information about that box will be shown.

Place the box on the scale. If in auto-print mode a label will be dispensed. If not you can touch the print button and a label will be dispensed. The screen will adjust to the new counts and information. If the next box is the same product, just place it on the scale. If it is a different SKU, first touch the button with that SKU number, and then place the box on the scale.

When the specified box count for a pallet is reached, a pallet label will automatically dispense after the box label.

Close Pallet Short

If you need to close the pallet short, simply touch the button showing that SKU and then touch close pallet. A pallet label will dispense and the pallet will be closed short.

Delete Pallet

If you weigh a box with the wrong sku you have 2 options.

1. If it is the last box weighed, simply touch "Delete Last Box". The Delete box screen will appear showing the serial number of the last box. You just press OK. A confirmation box showing the product and pallet of the box is displayed and you need to confirm this is the box you want to delete.

2. If it is not last box weighed, simply touch "Delete Box". The Delete box screen will appear and you need to type in the serial number of the box you need to delete. You just press OK. A confirmation box showing the product and pallet of the box is displayed and you need to confirm this is the box you want to delete.

You will then receive confirmation the box was deleted. The pallet counts will adjust to reflect the new count. This label may now be discarded.

Reprint Last Box

If the label that is dispensed is unusable for some reason, you can touch the "Reprint Last Box" button and a new label will be dispensed with the exact same information, including serial number, of the last label printed.

Batch Label

Touching the "Batch Label" button will dispense a sub-total label. Depending on the plant, this may either be a subtotal for just the current batch or job, it might be just for the current product and lot on all scales, or it might be for all products weighed on this scale. It will give the supervisor a picture of the up-to-date numbers for whatever totals are chosen.

Main Menu

Touching the "Main Menu" button allows the supervisor to access features that are not for a normal user. These include changing the production date, printing batch labels, deleting pallets. These functions are specific to the system and are determined during design.